

Washington RnD Marijuana Certificate of Analysis

License # 0008 Foreign Matter • Moisture • Water Activity • Microbiological • Mycotoxins • Potency • Terpenes • Residual Solvents

NO IMAGE AVAILABLE

Client Name: Hemp Indica
Sample Name: Superfood
Sample ID: 11121803
Received On: 11/12/18
Date Completed: 11/15/18
Expires on: 02/10/19

jesse@jessenicola.com
 (719) 619-7070

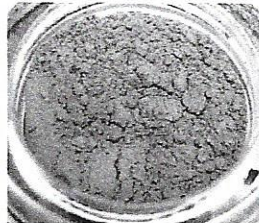


Honestly Tested™

Labs

5501 NE 109th Ct., Suite N
 Vancouver, WA 98662
 (360) 513-9377 or (360) 947-6767
 www.goatlabs.co
 dani@goatlabsinc.com

Potency Tech: SKW



Sara Whitney 11/15/18
 Khanh Reed, Lab Director or Delegate

LOQ = Limit of Quantification; The reported result is based on a sample weight with the applicable moisture content for that sample. Unless otherwise stated all quality control samples performed within specifications established by the Laboratory are 0.1%.

Cannabinoid (mg/g)	
HPLC/UV-Vis	
CBD-A	<0.1
CBG-A	<0.1
THC-A	<0.1
CBD	12.37
CBG	<0.1
THC-V	<0.1
CBN	<0.1
Δ9 THC	<0.1
Δ8 THC	<0.1
CBC	<0.1

UNCONVERTED Totals (mg/g)	
"Total" = Total Sum of Unheated Cannabinoids	
"Total" Cannabinoids	12.37

Terpenes (%)	
GC/MS	
α-Pinene	
Myrcene	
β-pinene	
Terpinolene	
Limonene	
Linalool	NA
Caryophyllene	
Humulene	
Caryophyllene Oxide	
α-Bisabolol	
Total Terpenes	

Residual Solvents* (ppm)	State Limits
GC/MS	WAC 314-55-102
Acetone	5,000
Benzene	2
Butane(s)	5,000
Cyclohexane	3,800
Chloroform	2
DCM**	600
Ethyl Acetate	5,000
Heptane	NA 5,000
Hexane(s)	290
Isopropanol	5,000
Methanol	3,000
Pentane(s)	5,000
Propane	5,000
Toluene	890
Xylene***	2,170

Converted Totals (mg/g)	
Total THC = THCa * 0.877 + Δ9-THC	
Total CBD = CBDA * 0.877 + CBD	
Reported Total Δ9THC	<0.1
Reported Total CBD	12.37
Total Cannabinoids	12.37

Mycotoxin Count (ppb)	State Limits
Elisa StatFax 4700	WAC 314-55-102
Aflatoxins	NA 20
Ochratoxins	20

Microbial Count (CFU)	State Limits
3M Petrifilm Plating	WAC 314-55-102
Bile-Tolerant Gram Negative	10000
E. Coli	NA None
Salmonella	None

*And isomer thereof.
 **Dichloromethane.
 ***Usually 60% m-xylene, 14% p-xylene, 9% o-xylene with 17% ethyl benzene.

Notes

TBD = To Be Determined
 NA = Not Applicable
 ND = None Detected

This product has been tested by G.O.A.T. Labs, Inc using valid testing methodologies and quality system as required by state law. Values reported relate only to the product tested. G.O.A.T. Labs, Inc makes no claims as to the efficacy, safety, or other risks associated with any detected or non-detected levels of any compounds reported herein. This Certificate shall not be reproduced except in full, without the written approval of G.O.A.T. Labs, Inc.