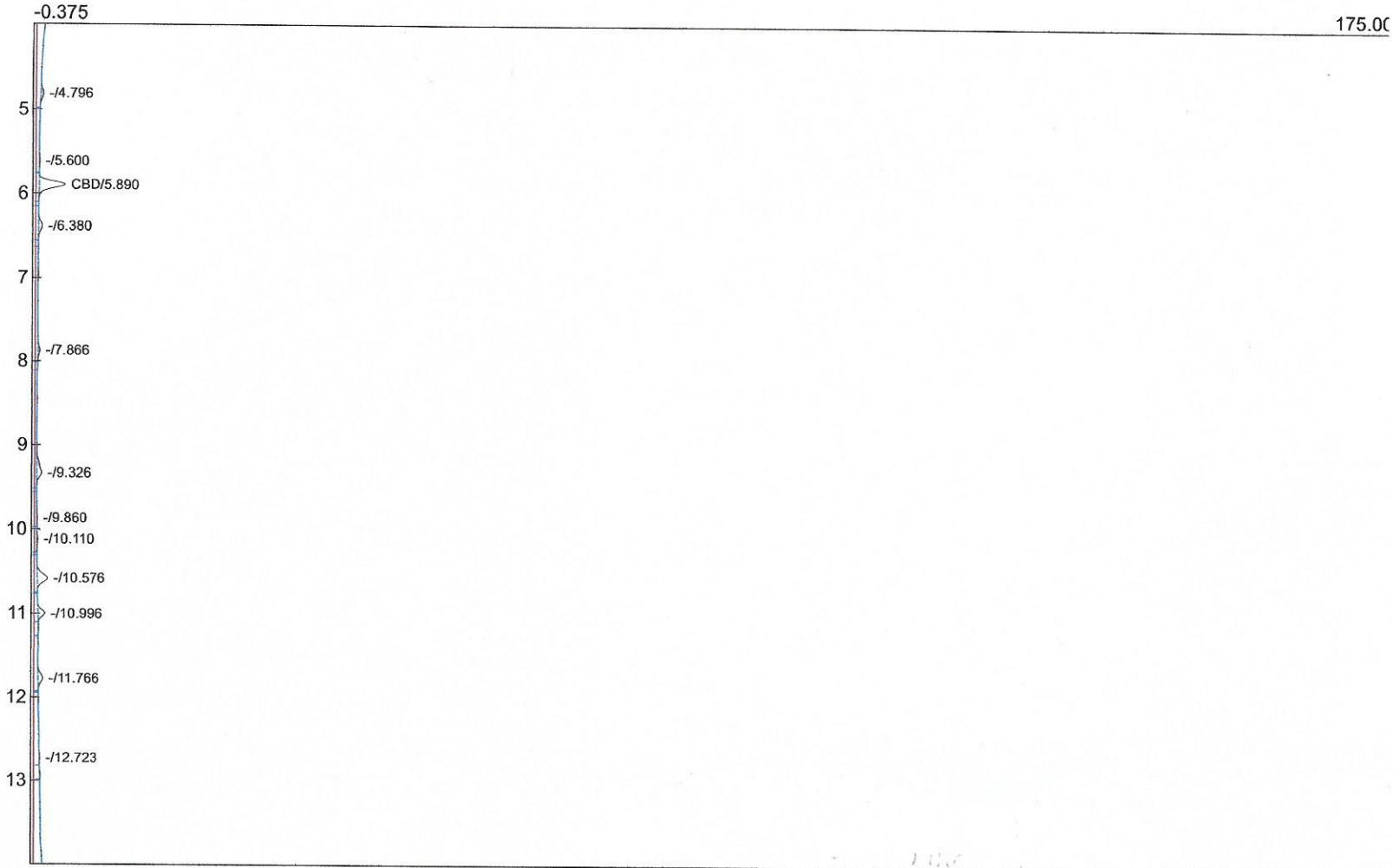


Client: Hemp Indica
 Analysis date: 01/29/2019 12:20:02
 Method: GC-FID
 Data file: GC1-16-2915.CHR ()
 Sample: Salve
 Operator: Holmes



Component	Retention	Area	External	Units	Temperature
lvent	0.203	7132.7427	0.0000		170
iD	5.890	19.8286	0.5116	%	219
ta8-THC	0.000	0.0000	0.0000		0
ta9-THC	0.000	0.0000	0.0000	%	0
iG	0.000	0.0000	0.0000	%	0
iN	0.000	0.0000	0.0000	%	0
		7152.5713	0.5116		